



INVESTMENT PROPERTY

1413 NORTH PROSPECT AVENUE - CHAMPAIGN, IL

SOLD

SALE

\$295,000.00

SIZE

14,042 SF Commercial Site

1,392 SF Building

LOCATION

Highly visible (corner of Prospect & Frances)

Near I-74/N Prospect

Ample Parking – new asphalt

LEASE INFORMATION

\$2,800/MO/NNN - April 1, 2009 through March 31, 2010

\$2,300/MO/NNN - April 1, 2010 through March 31, 2014

ZONING

CG – Commercial General; provides for a wide range of retail, service, office & commercial uses. A high-intensity commercial district. CG generates high levels of traffic.

TRAFFIC COUNTS

25,800 (2003)

TAX INFORMATION

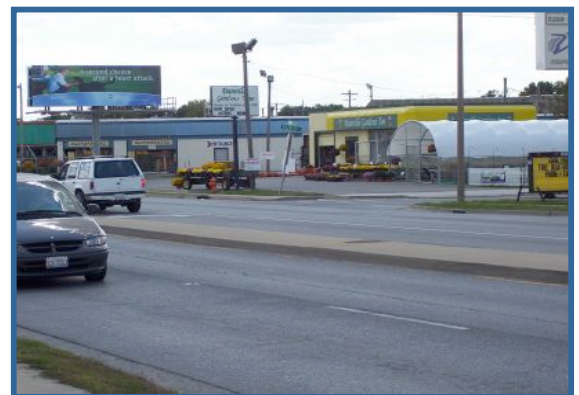
PIN # - 41-20-02-476-007

2008 Taxes - \$4,462.58

For more information on this property contact:

Brian Swartz – 217-840-2602

Email – bswartz@harvestco.com



harVestco, LLC

2813 North Rising Road, Suite 100

Champaign, IL 61822

Phone: 217-355-2085

Fax: 217-355-2578

Email: inquire@harvestco.com

www.harvestco.com

This information is from sources we believe to be reliable, but we make no representations or warranties, expressed or implied, as to the accuracy of the information. References to square footage or age are approximate. Buyer must verify the information and bears all risk for any inaccuracies.