



FARMLAND / COMMERCIAL

TRAILSIDE DRIVE NORTH - MAHOMET, IL

FARMLAND / DEVELOPMENT POTENTIAL

SALE

\$10,900/Acre

SIZE

41.46 Acres

LEGAL DESCRIPTION

Located in the SW $\frac{1}{4}$ of the SE $\frac{1}{4}$ of S 13 and the NW $\frac{1}{4}$ of the NE $\frac{1}{4}$ of S 24, T 20-N – R 7 E

LOCATION

41.46 Acres adjacent to Trailside Subdivision. Utilities are adjacent to site.

ZONING

AG-2 (Rezoning necessary for residential development)

UTILITIES

Utilities adjacent to site (Sangamon Valley water & sewer)

FSA INFORMATION

41.35 crop acres

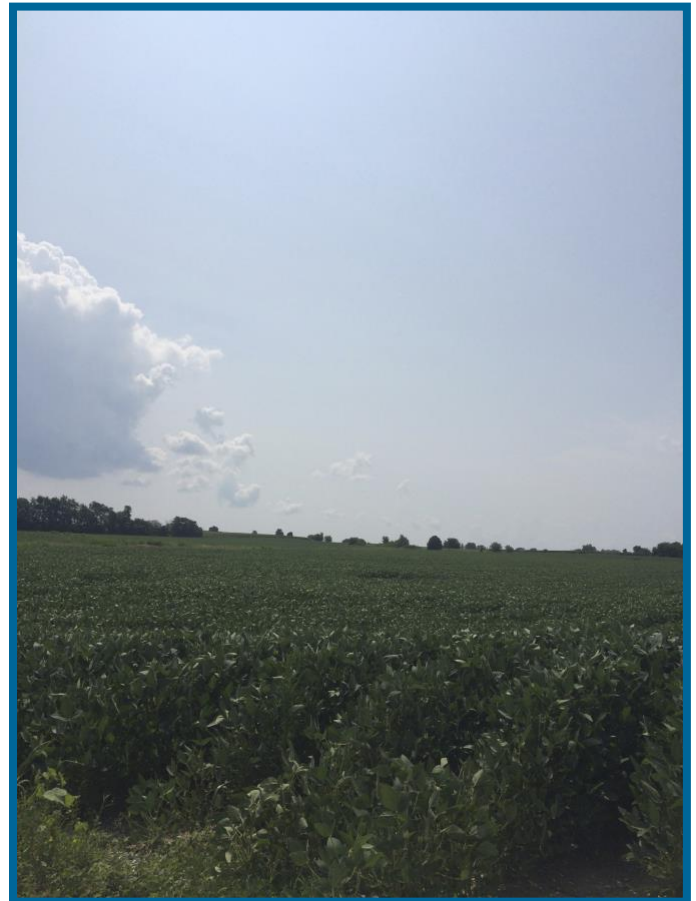
2.90 waterway acres

TAX INFORMATION

PIN # - 15-13-24-200-007 (\$168.16)

PIN # - 15-13-13-400-005 (\$990.90)

2019 Total Taxes - \$1159.06



For more information on this property:

Brian Swartz, Broker - 217-840-2602

Email - bswartz@harvestco.com

harVestco, LLC
Real Estate Marketers & Managers
2813 North Rising Road, Suite 100
Champaign, IL 61822
Phone: 217-355-2085
Email: inquire@harVestco.com
www.harVestco.com

This information is from sources we believe to be reliable, but we make no representations or warranties, expressed or implied, as to the accuracy of the information. References to square footage or age are approximate. Buyer must verify the information and bears all risk for any inaccuracies.