

COMMERCIAL PROPERTY

TRAILSIDE DRIVE NORTH - MAHOMET, IL

DEVELOPMENT POTENTIAL / FARMLAND

SALE

\$9,500.00/Acre

SIZE

41 +/- Acres

LEGAL DESCRIPTION

Located in the SW ¼ of the SE ¼ of S 13 and the NW ¼ of the NE ¼ of S 24, T 20-N – R 7 E

LOCATION

41 Acres adjacent to Trailside Subdivision. Utilities adjacent to site.

ZONING

AG-2 Could be re-zoned for residential development

UTILITIES

Utilities adjacent to site (Sangamon Valley water & sewer)

TRAFFIC COUNTS

Approximately 10,000/day

TAX INFORMATION

PIN # - 15-13-24-200-007

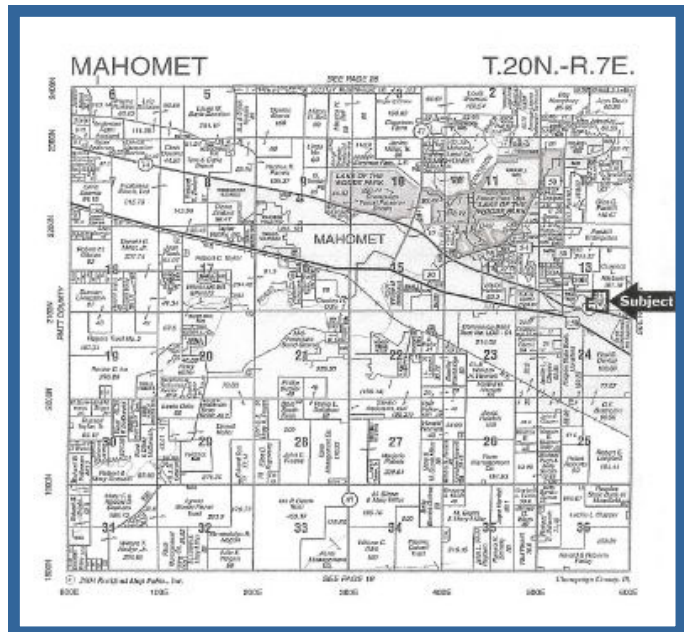
PIN # - 15-13-13-400-005

2008 Taxes - \$451.72

For more information on this property contact:

Brian Swartz - 217-840-2606

Email - bswartz@harvestco.com



harVestco, LLC
 2813 North Rising Road, Suite 100
 Champaign, IL 61822
 Phone: 217-355-2085
 Fax: 217-355-2578
 Email: inquire@harVestco.com
www.harVestco.com