



COMMERCIAL PROPERTY

TRAILSIDE DRIVE NORTH - MAHOMET, IL

DEVELOPMENT POTENTIAL / FARMLAND

SALE
\$10,900/Acre

SIZE
41 +/- Acres

LEGAL DESCRIPTION
Located in the SW ¼ of the SE ¼ of S 13 and the NW ¼ of the NE ¼ of S 24, T 20-N - R 7 E

LOCATION
41 Acres adjacent to Trailside Subdivision. Utilities adjacent to site.

ZONING
AG-2 Could be re-zoned for residential development

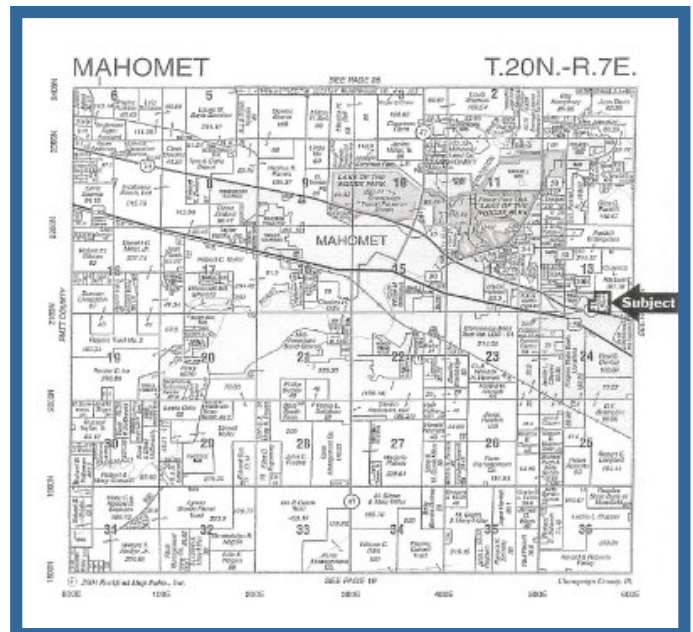
UTILITIES
Utilities adjacent to site (Sangamon Valley water & sewer)

TRAFFIC COUNTS
Approximately 10,000/day

TAX INFORMATION
PIN # - 15-13-24-200-007
PIN # - 15-13-13-400-005
2010 Taxes - \$536.26

For more information on this property contact:

Brian Swartz - 217-840-2606
Email - bswartz@harvestco.com



harVestco, LLC
2813 North Rising Road, Suite 100
Champaign, IL 61822
Phone: 217-355-2085
Fax: 217-355-2578
Email: inquire@harVestco.com
www.harVestco.com